



SAFALTA CLASS<sup>TM</sup>

An Initiative by **अमरउजाला**

P-2  $\Rightarrow$  S.S.A.

INDIAN POLITY BY-  
SUJEET BAJPAI SIR



# Question No: 1

1. Consider the following two statements A and B on people's participation in democracy and choose the correct answer:

A. Organizing social movements is a way to challenge the government

and its functioning in a democracy.

B. Democracy allows people to participate but all sections of people are not able to do so.

(a) A is true and B is false.

(b) Both A and B are true.

(c) A is false and B is true.

(d) Both A and B are false.

# Question No: 1

लोकतंत्र में लोगों की सहभागिता पर दिए गए निम्नलिखित दो कथनों A और B पर विचार कीजिए और सही उत्तर का चयन कीजिए:

A. लोकतंत्र में सामाजिक आंदोलनों को संगठित करना, सरकार और उसके कार्यों को चनौती देने का एक तरीका है।

B. लोकतंत्र सभी लोगों को भागीदार होने की अनुमति देता है। लेकिन समाज के सभी वर्गों के लोग ऐसा करने में समर्थ नहीं होते हैं।

- (a) A सही है और B गलत है।
- (b) A और B दोनों सही हैं।
- (c) A गलत है और B सही है।
- (d) A और B दोनों गलत हैं।

# Question No: 2

Which one of the following is the Tibetan National epic?

- (a) Buddha saga
- (c) Sidha saga
- (b) Kesar saga
- (d) Nirvana saga

# Question No: 2

निम्नलिखित में से कौन-सा तिब्बत का राष्ट्रीय ग्रंथ है?

- (a) बुद्ध सागा
- (c) सिद्ध सागा
- (b) केसर सागा
- (d) निर्वाण सागा

→ लोङ्क़ेख

# Question No: 3

Which one of the following statements about **media** is **incorrect**?

~~(a)~~ Money is earned through advertisements.

~~(b)~~ The technology that mass media uses keeps on changing.

(c) An important function of mass media is to communicate information to the people.

(d) There is regular interference on the part of the government in the functioning of media.

# Question No: 3

संचार माध्यम के संदर्भ में निम्नलिखित कथनों में से कौन-सा **गलत** है?

(a) विज्ञापनों द्वारा धन कमाया जाता है।

(b) जनसंचार द्वारा उपयोग में लायी जाने \_\_\_\_\_ वाली तकनीकें बदलती रहती हैं।

(c) जनसंचार का लोगों तक जानकारी पहुँचाना एक महत्वपूर्ण कार्य है।

(d) संचार माध्यम की कार्यप्रणाली में **नियमित** सरकारी हस्तक्षेप रहता है।



# Question No: 4

The **cost** to advertisement on a news channel depends on:

- (a) The popularity of the channel**
- (b) The demand of the viewers**
- (c) The big business houses**
- (d) The corporate sector**

# Question No: 4

समाचार चैनल पर विज्ञापन का मूल्य निर्भर होता है:

- (a) चैनल की लोकप्रियता पर
- (b) दर्शकों की माँग पर
- (c) बड़े व्यापारिक घरानों पर
- (d) कम्पनी क्षेत्र पर

# Question No: 5

पटवारी (लेखपाल) द्वारा किए गए कार्यों के विषय में A और B दो कथन दिए गए हैं, उन पर विचार कीजिए और निम्नलिखित में से सही उत्तर का चयन कीजिए:

✓ A. पटवारी एक गाँव अथवा गाँवों के समूह की भूमि का अद्यतन लेखा-जोखा रखता है।

✓ B. पटवारी अपने अधिकार-क्षेत्र में उगाई गई फसलों के बारे में सरकार को सूचना देने के लिए उत्तरदायी होता है।

updated

# Question No: 5

Consider the following two statements about the functions performed by 'Patwari and choose the correct answer from the following:

A. Patwari maintains and updates land records of a village or a group of villages.

B. Patwari is responsible for providing information to the government about the crops grown in the area under her/his jurisdiction.

# Question No: 5

(a) A सही है और B गलत है।

(b) A और B दोनों सही हैं।

(c) A गलत है और B सही है।

(d) A और B दोनों गलत है।

**(a) A is true and B is false.**

**(b) Both A and B are true.**

**(c) A is false and B is true.**

**(d) Both A and B are false.**

# Question No: 6

Which one of the following statements is **incorrect** about democracy?

(a) In a democracy the country's citizens are allowed to elect whomever they want.

(b) In a democracy citizens enjoy certain freedoms.

(c) In a democracy a Ruler has **absolute powers** to rule the country.

(d) In a democracy people can raise questions about the decisions.

*Dictatorship*

# Question No: 7

जनहित यात्रिका (PIL) के संदर्भ में नीचे दिए गए दोनों कथनों पर विचार कीजिए

और सही उत्तर का चयन कीजिए:

A. यह एक ऐसी व्यवस्था है, जिसके माध्यम से सरकार के क्रियाकलापों के विषय में आवश्यक जानकारी प्राप्त करते हैं।

B. यह एक ऐसी व्यवस्था है, जिसके माध्यम से किसी व्यक्ति या संस्था को, जिनके अधिकारों का उल्लंघन हुआ है, उन्हें न्याय पाने के लिए उच्च न्यायालय या सर्वोच्च न्यायालय में याचिका दायर करने का अधिकार दिया गया है।

# Question No: 7

Consider the following two statements about Public Interest Litigation (PIL) and choose the correct answer:

~~A.~~ It is a mechanism to seek necessary information about the functioning of the government.]

✓ B. It is a mechanism that allows any individual organisation to file petition to secure justice in the High Court or Supreme Court on behalf of those whose rights are violated.

PIL → USA (+) P. N. Bhagwati



# Question No: 7

- (a) A is true and B is false.
- (b) Both A and B are true.
- (c) A is false and B is true.
- (d) Both A and B are false.

- (a) A सही है और B गलत है।
- (b) A और B दोनों सही हैं।
- (c) A गलत है और B सही है।
- (d) A और B दोनों गलत हैं।

# Question No: 8

Consider the following two statements A and B about the 'Question Hour Session of the Parliament and choose the correct answer:

A. The members of Parliament seek information about the working of the government.

B. It is a mechanism through which the executive controls the legislature.

Control

# Question No: 8

संसद के 'प्रश्नकाल सत्र' के सम्बन्ध में A और B दोनों कथनों पर विचार कीजिए और निम्नलिखित विकल्पों में सही सही विकल्प का चयन कीजिए:

- A. सांसद सरकार के कामकाज के बारे में जानकारी प्राप्त करते हैं।
- B. यह एक ऐसी व्यवस्था है जिसमें कार्यकारिणी विधायिका को नियंत्रित करती है

# Question No: 8

- (a) A is true and B is false.
  - (b) Both A and B are true.
  - (c) A is false and B are true.
  - (d) Both A and B are false.
- 
- (a) A सही है और B गलत है।
  - (b) A और B दोनों सही हैं।
  - (c) A गलत है और B सही है।
  - (d) A और B दोनों गलत हैं।

# Question No: 9

According to the Constitution, how many organs of the State are there?

- (a) Two
- (b) Three
- (c) Four
- (d) Five

# Question No: 10

Federalism refers to

संघीयता  
↳ 7 Sch.

(a) existence of more than one level of government in the country

(b) Federation of States to run the country

Union

~~(c)~~ only the (Central Government) has the right to make laws

~~(d)~~ Judiciary is the highest authority in the country

# Question No: 11

If a politician in one state decides to not allow labourers from other states to work in his state, which Fundamental Right will be violated?

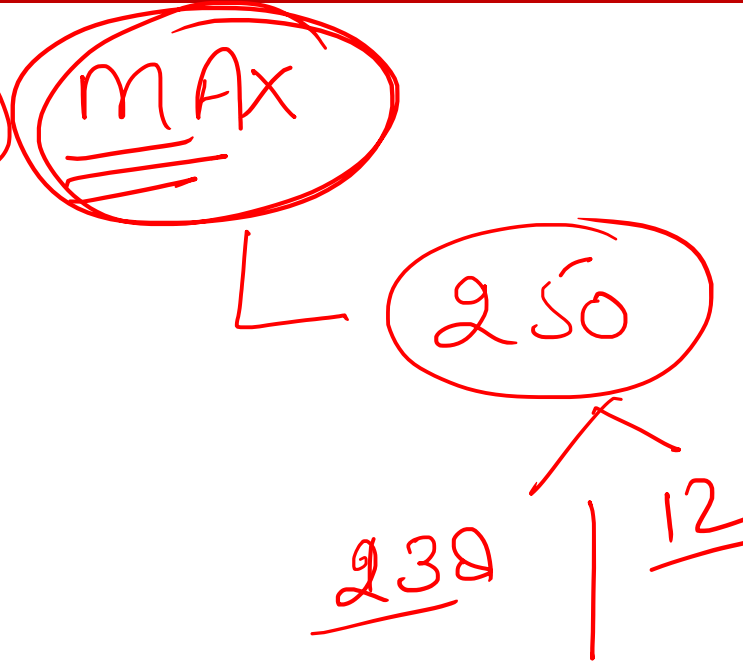
- (a) Right to equality
  - (b) Right to freedom
  - ~~(c) Right against exploitation~~
  - ~~(d) Right to constitutional remedies~~
- 19 - Art

# Question No: 12

The Rajya Sabha can have at most

- (a) 225 members
- (b) 235 members
- (c) 245 members
- (d) 260 members

(Present)





# Question No: 13

The Parliament in our system has immense power because

(a) it has the power to make laws

अत्यधिक

(b) it has the power to overrule judiciary

(c) it is the representative of the people

~~(d) all powers are vested with the Parliament~~

# Question No: 14

Function of the executive in Indian democracy is to

(a) enact laws — Leg.

**(b) implement laws made by the Parliament**

(c) elect the Prime Minister

(d) elect the **President**

Appointed

# Question No: 15

'The Mid-day Meal Programme is said to have many positive effects. Which one of the following is not one of them?

- (a) Enrolment of poor children in schools has increased.
- (b) Caste prejudices have been reduced.
- (c) Poor students can now concentrate on their studies as they do not have empty stomachs.
- (d) Poor children are getting high marks in examinations.

# Question No: 16

A method used in a Social Science classroom in which learners are asked to evaluate one another's likeability is called as

- (a) Self-assessment
- (b) Sociometric techniques
- (c) Case study
- (d) Psychometric techniques

# Question No: 17

Which of the following is an essential quality of **creative** thinking?

(a) ~~Convergent~~

**(b) Generative**

(c) ~~Reflective~~

(d) ~~Deductive~~

# Question No: 18

In order to understand the role of various issues during an election, which of the following would you most likely ask your students?

- (a) Analyze newspaper editorials regarding arguments against each other by political parties
- (b) Analyze each party's priorities and the types of policies it is most likely to support → करियर
- (c) Conduct survey in your locality for the popularity of political parties
- (d) Analyze and compare the time devoted by National news channels to different parties

# Question No: 19

Which of the following statements is correct about Social Science?

(a) Social Science is not concerned with diverse concerns of society.

(b) Social Science emphasises homogeneity and rituals.

(c) Social Science is a subjectivist discipline.

(d) Social Science lays the foundation for an analytical and creative mindset.

# Question No: 20

In Social Science, the recent NCF position paper on examination reforms emphasises

- (a) open book exams
- (b) continuous assessment**
- (c) test performance
- (d) flexible sitting arrangement while testing



# Question No: 21

**Studying the life-history of a village community to understand the education of the young ones is an example of which kind of data?**

- (a) Secondary data**
- (b) Narrative data**
- (c) Clinical case-study data**
- (d) Primary data**

# Question No: 22

The process of deriving inferences from observable facts is called as

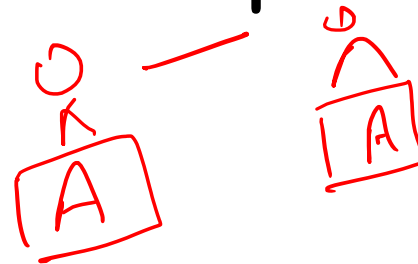
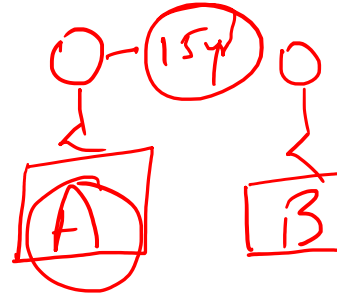
- (a) Analysis
- (b) Exposition
- (c) Deduction
- (d) Brainstorming

# Question No: 23

चिन्तना

In order to teach about equity, which of the following would be the most suitable method?

- (a) Give a lecture
- (b) Give a project
- (c) Assign field-work around the ideas of poverty and capitalism
- (d) Highlight the constitutional provisions to promote equity



# Question No: 24

Consider the following two statements, A and B, on 'Social advertisements' and choose the correct answer:

- A. Social advertisements are those advertisements that have larger message for the society.
- B. Social advertisements are made **only** by the State.

गती,  
विज्ञापन

# Question No: 24

---

- (a) A is false and B is true**
- (b) Both A and B are false**
- (c) Both A and B are true**
- (d) A is true and B is false**

# Question No: 25

- The 'Janpad Panchayat' has
- (a) many Gram Panchayats under it.
  - (b) many Zila Parishads under it.
  - (c) many Municipal wards under it.
  - (d) many Gram Sabhas under it.

एक ही (१)

जिला परिषद

# Question No: 26

## The Right to Constitutional Remedies

- (a) allows only the religious minorities to approach the court if they believe that their cultural and educational rights provided in the Constitution have been violated by the State.
- (b) allows only the linguistic minorities to approach the court if they believe that their cultural and educational rights provided in the Constitution have been violated by the State.
- (c) allows all citizens to approach the court if they believe that any of the Directive Principles of State Policy have not been fulfilled by the State.
- (d) allows citizens to approach the court if they believe that any of their Fundamental Rights have been violated by the State.

# Question No: 27

Which one of the following statements is incorrect about the judiciary?

- (a) It plays a crucial role in protecting the Fundamental Rights of citizens.
- (b) Judiciary has the power to strike down laws passed by the Parliament.
- (c) The judicial system provides a mechanism for resolving disputes between citizens, between citizens and the government, but not between two State governments.
- (d) The legislature and the executive cannot interfere in the work of judiciary.



# Question No: 28

Which one of the following does not fall within the purview of Civil Law? —

गौरीस अर्ज

- (a) Claiming custody of children
- (b) Disputes related to sale of land
- (c) Harassing a woman for dowry
- (d) Filing a divorce case

# Question No: 29

The Members of Legislative Assembly are

(a) appointed by the Chief Minister.

(b) elected by the people.

(c) appointed by the Governor.

(d) appointed by the Prime Minister.

# Question No: 30

Which one of the following statements is not true about the Parliament of India?

(a) The Parliament in our system has immense powers because it is the representative of the people.

~~(b)~~ In the matters dealing with finances, the government does not require Parliament's approval.

दस्तावेज

(c) The Parliament while in session, begins with a question hour.

(d) The Parliament consists of the President, the Rajya Sabha and the Lok Sabha.