

BQ4Q571

Chrysophytes, Euglenoids, Dinoflagellates and Slime moulds are included in the kingdom

- ~~(A)~~ Protista
- (C) Animalia

- (B) Fungi
- (D) Monera

(Prokaryotes)

BQ4S571

Ans [A]

All unicellular eukaryotic organism like diatoms, desmids (chrysophytes), euglenoids, dinoflagellates and slime mould are included in Protista.

BQ4Q572

The primitive prokaryotes responsible for the production of biogas from the dung of ruminant animals include the -

- (A) Thermoacidophiles
- (B) Methanogens
- (C) Eubacteria
- (D) Halophiles

BQ4S572

Ans [B]

Methanogens are methane producing organism.

BQ4Q573

Which one of the following statements is wrong ?

- (A) Golden algae are also called desmids
- ☒ (B) Eubacteria are also called false bacteria
- (C) Phycomycetes are also called algal fungi
- (D) Cyanobacteria are also called blue-green algae

Eubacteria
↓
True bacteria

BQ4S573

Ans [B]

Eubacteria are true bacteria.

BQ4Q574

Which one of the following characteristics is not shared by birds and mammals?

(A) Breathing using lungs ✓

~~(B)~~ Viviparity ✗

(C) Warm blooded nature ✓

(D) Ossified endoskeleton ✓

BQ4S574

Ans [B]

Birds are always oviparous where as prototherian mammals are oviparous while rest of the mammals are viviparous.

BQ4Q575

One of the major components of cell wall of most fungi is :

- (A) Peptidoglycan
- (B) Cellulose
- (C) Hemicellulose
- ~~(D) Chitin~~

BQ4S575

Ans [D]

Most of the fungi have chitin in their cell wall [~~xy~~ Oomycetes have cellulosic cell wall]

BQ4Q577

Match the name of the animal (Column I), with one characteristics (Column II), and the phylum/class (column III) to which it belongs :

	Column I	Column II	Column III
(A)	Petromyzon	ectoparasite	Cyclostomata
(B)	Ichthyophis	terrestrial	Reptilia
(C)	Limulus	body covered by chitinous exoskeleton	Pisces
(D)	Adamsia	radially symmetrical	Porifera

(sea anemone)

Cnidaria

Amphibian

Arthropoda

BQ4S577

Ans [A]

Petromyzon

Petromyzone is a vertebrate belonging to cyclostomata (cyclo = Rounded, Stoma = mouth) They remain as an ectoparasite on marine fishes & turtles.

BQ4Q578

Which of the following are correctly matched with respect of their taxonomic classification?

(A) Flying fish, cuttlefish, silverfish – Pisces

Pisces

(rept)

Mollusca

Arthropods

(B) Centipede, millipede, spider, scorpion-Insecta

Arachnida

Diplopoda

Chilopoda

(C) House fly, butterfly, tsetsefly, silverfish-Insecta ✓

(D) Spiny anteater, sea urchin, sea cucumber-Echinodermata

Mammalia

Echinodermata

BQ4S578

Ans [C]

House fly, butterfly, tsetsefly, silverfish-Insecta

House fly, butterfly, tsetse fly, silverfish, all are Insects

BQ4Q579

Which group of animals belong to the same phylum ?

(A) Malarial parasite, Amoeba, Mosquito

→ Protist

→ Arthropoda

(B) Earthworm, Pinworm, Tapeworm

(Annelida)

(Nemertode)

(Platyhelminthes)

~~(C) Prawn, Scorpion, Locusta~~

→ ~~Arthropoda~~

(D) Sponge, Sea anemone, Starfish

↓
Porifera

↓
Cnidaria

→ Echinodermata

BQ4S579

Ans [C]

Prawn, Scorpion, Locusta

Prawn, Scorpion & Locusta all belong to phylum Arthropoda

BQ4Q580

One of the representatives of Phylum Arthropoda is :

- Mollusca*
(A) Cuttlefish (*sepia*) ~~(B)~~ Silverfish (*Arthropoda*)
(C) Pufferfish (D) Flying fish

BQ4S580

Ans [B]

Silverfish

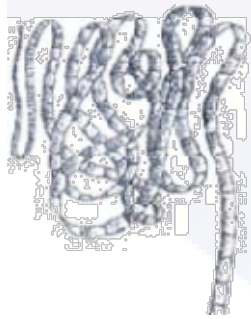
=

~~Star~~

Silverfish (Book-worm) belongs is phylum arthropoda

BQ4Q581

The figure shows four animals (a), (b), (c) and (d). Select the correct answer with respect to a common characteristics of two of these animals.



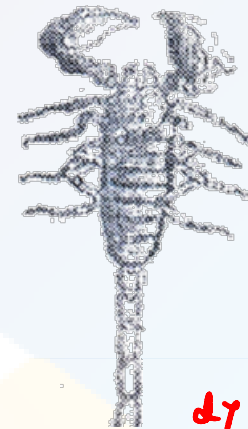
a) Tapeworm
(Plecylhelanthus)



b) Aurelia
(Coelenterata)



c) Octopus
(Mollusca)



d) Scorpion
(Chelicerata)

Book lungs

- ☒ (A) (c) and (d) have a true coelom
- (B) (a) and (d) respire mainly through body wall x
- (C) (b) and (c) show radial symmetry x
- (D) (a) and (b) have cnidoblasts for selfdefence x

BQ4S581

Ans [A]

(c) and (d) have a true coelom

The true coelom is a body cavity which is formed during the process of embryo development. The embryo development takes place from three germinal layers and the example of true coelom are: all complex animals including mollusks, annelid, arthropods, echinoderms and chordates.

BQ4Q582

Frogs differ from humans in possessing :

- (A) Thyroid as well as parathyroid
- (B) Paired cerebral hemispheres
- (C) Hepatic portal system
- ☒ (D) Nucleated red blood cells

BQ4S582

Ans [D]

Nucleated red blood cells

Frog is different from humans in possessing the RBC's which are nucleated oval or biconvex in the case of frogs but and have haemoglobin.

BQ4Q583

Which one of the following statements is totally wrong about the occurrence of notochord, while the other three are correct ?

- (A) It is present throughout life in Amphioxus (Cephalochordate)
- (B) It is present only in larval tail in Ascidians (urochordate)
- (C) It is replaced by vertebral column in adult frog .
- ☒ (D) It is absent throughout life in humans from the very beginning

↳ present in embryonic stage & is replaced by vertebral column

BQ4S583

Ans [D]

It is absent throughout life in humans from the very beginning

BQ4Q584

One example of animals having a single opening to the outside that serves both as mouth as well as anus is

(A) Octopus (Mollusca)

(B) Asterias (Starfish) - Echinodermata

(C) Ascidia

~~(D)~~ Fasciola (Platyhelminthes)

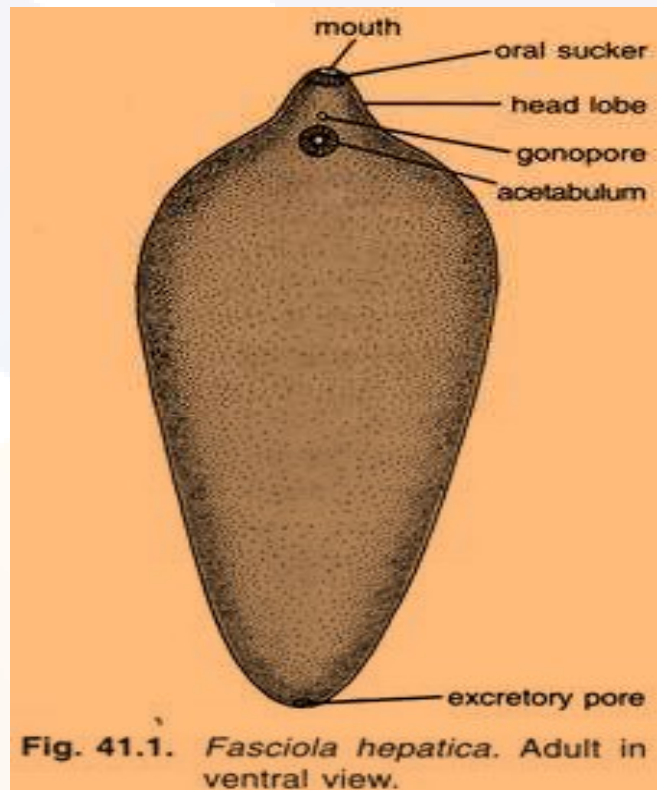
↓
liver fluke

↓
urochordate

BQ4S584

Ans [D]

Fasciola



BQ4Q585

Which one of the following statements about all the four of Spongilla, Leech, Dolphin and Penguin is correct –

- (A) Penguin is homoiothermic while the remaining three are poikilothermic
- (B) Leech is fresh water form while all others are marine
(Pouifera)
- ✓ (C) Spongilla has special collared cells called choanocytes, not found in the remaining three
- (D) All are bilaterally symmetrical (Spongilla →)

BQ4S585

Ans [C]

Spongilla has special collared cells called choanocytes, not found in the remaining three

The body of a sponge is cylindrical, asymmetrical or has radial symmetry whereas leech, dolphin and penguin have bilateral symmetry.

Dolphin is homeothermic. Dolphin belongs to flightless birds and they have the ability to maintain body temperature.

sponges are aquatic animals. they can be marine or fresh water.

Sponges possess choanocytes or flagellated cells and helps in ingestion of food particles.

BQ4Q586

Which one of the following kinds of animals are triploblastic?

- ☒ (A) Flat worms (Platyhelminthes)
- (B) Sponges
- (C) Ctenophores (comb jellies or sea walnuts)
- (D) Corals (coelenterates)

BQ4S586

Ans [A]

Flat worms

Flatworms are called as triploblastic as they are composed of three fundamental cell layers which are mesoerm, ectoderm and endoderm.