



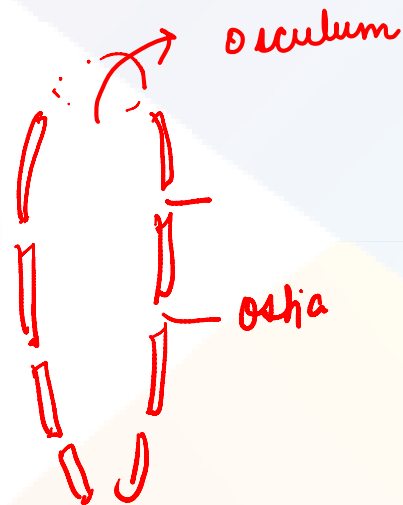
ANIMAL KINGDOM PROBLEM SOLVING

By : Dr.Ayushi Rawat

BQ4Q556

In case of poriferans, the spongocoel is lined with flagellated cells called :

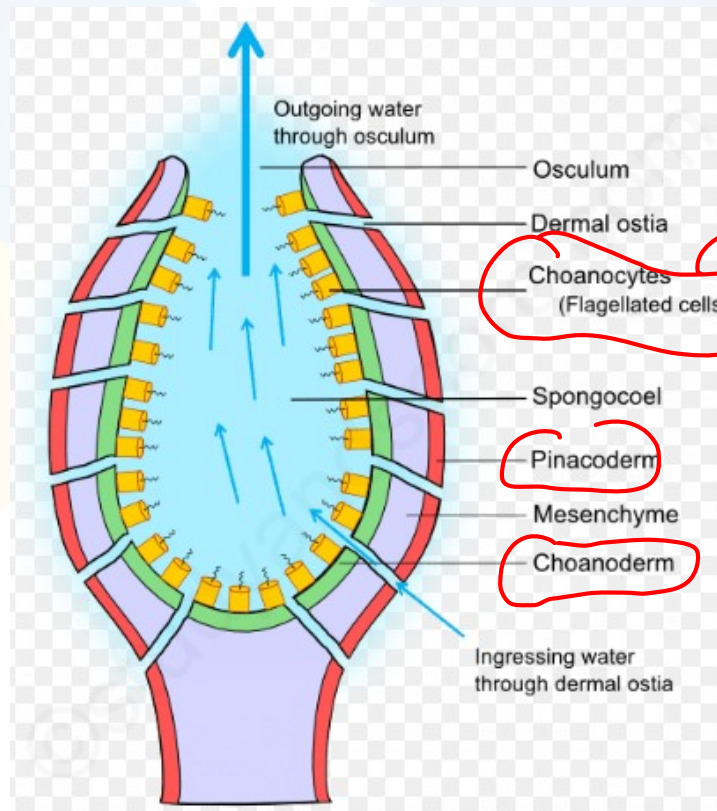
- (A) Mesenchymal cells
- (B) Ostia
- (C) Oscula
- ☒ (D) Choanocytes



BQ4S556

Ans [D]

Choanocyte or Collar cell are flagellated cell and lines Spongocoel and canal both.



BQ4Q557

An important characteristic that Hemichordates share with Chordates is :

- (A) Pharynx without gill slits ✗ (B) Absence of notochord ✗
(C) Ventral tubular nerve cord ~~(D)~~ ✓ Pharynx with gill slits

Characteristics of chordates

- Notochord
- ✓ • Dorsal hollow nerve cord
- Pharyngeal gill slits
- Post anal tail

BQ4S557

Ans [D]

Pharynx with gill slits

Hemichordates have pharyngeal gill slits which similar to the chordates.

BQ4Q558

Which among these is the correct combination of aquatic mammals ?

(A) Trygon, Whales, Seals

(B) Seals, Dolphins, Sharks

(C) Dolphins, Seals, Trygon

✓ (D) Whales, Dolphins, Seals

↙ cartilaginous
fish

} Aquatic mammals

BQ4S558

Ans [D]

Whales, Dolphins, Seals

Whale, Dolphins, Seals are aquatic mammals belongs order cetacean.

BQ4Q559

Which of the following represents order of 'Horse' ?

(A) Ferus

(B) Equidae (family)

(C) Perissodactyla

(D) Caballus

↓
odd toed mammals
↳ horses, zebras, mules, Rhinoceros

Athodactyla - even toed mammals
↳ cow, buffaloes, sheeps

BQ4S559

Ans [C]

Perissodactyla

Horse belongs to order ~~p~~erissodactyla of class mammalia

Order ~~p~~erissodactyla consist mammals with odd toes.

BQ4Q560

Which is the National Aquatic Animal of India ?

- ~~(A)~~ River dolphin (B) Blue whale
(C) Sea-horse (D) Gangetic shark

◦ gangetic dolphin (Platanista gangetica)
◦ Vikramshila Gangetic Dolphin Sanctuary
↓
→ Bagalpur district, Bihar

BQ4S560

Ans [A]

River dolphin or gangetic dolphin is national aquatic animal of India

BQ4Q561

Which one of the following categories of animals, is correctly described with no single exception in it ?

- (A) ~~All bony fishes have four pairs of gills and an operculum on each side~~
→ fresh water sponge (spangille)
- (B) All sponges are marine and have collared cells
- (C) All mammals are viviparous and possess diaphragm for breathing
→ Placental (egg laying mammals)
- (D) All reptiles possess scales, have a three chambered heart and are cold blood (poikilothermal)
→ Crocodile - 4 chambered heart

BQ4S561

Ans [A]

All bony fishes have four pairs of gills and an operculum on each side

BQ4Q562

Which one of the following pairs of animals are similar to each other pertaining to the feature stated against them ?

- 4 chambered heart
- (A) Garden lizard and Crocodile - Three chambered heart ✗
- (B) Ascaris and Ancylostoma - Metameric segmentation ✗ (Nematodes)
- ✓ (C) Sea horse and Flying fish - Cold blooded (poikilothermal) ✓
- (D) Pteropus and Ornithorhyncus - Viviparity
? platypus (egg laying)

BQ4S562

~~Ans~~ [C]

Sea horse and Flying fish - Cold blooded (poikilothermal)

Sea horse and flying fish are fishes and fishes are cold-blooded animals i.e., the temperature of their body varies with the environment. Ornithorhynchus is oviparous, crocodile has 4-chambered heart, Ascaris and Ancylostoma do not show metameric segmentation

BQ4Q563

Which one of the following characteristics is common both in humans and adult frogs ?

(A) Internal fertilization *x*

(B) Nucleated RBCs *x*

~~(C)~~ Ureotelic mode of excretion

(D) Four – chambered heart *x*

major N₂ waste → urea

Adult frogs → 3 chambered

*Tadpoles → ammonotelic
↳ amniotes*

BQ4S563

Ans [C]

Ureotelic mode of excretion

Adult frog and human exhibit ureotelism because their excretory waste product is urea. this mode is called ureotelic mode of excretion.

BQ4Q564

Metagenesis refers to -

- (A) Presence of a segmented body and parthenogenetic mode of reproduction
- (B) Presence of different morphic forms
- ☒ (C) Alternation of generation between asexual and sexual phases of an organism
- (D) Occurrence of a drastic change in form during post-embryonic development

obelia

BQ4S564

Ans [C]

Metagenesis is alternation of generation between asexual polyp form and sexual medusa form of some coelentrates like obelia.

BQ4Q565

Body having meshwork of cells, internal cavities lined with food filtering flagellated cells and indirect development are the characteristics of phylum :

= (Amphiblastula, Parenchymula)

(A) Protozoa

(B) Coelenterata

~~(C)~~ Porifera

(D) Mollusca

BQ4S565

Ans [C]

In porifera body having meshwork of cells internal cavities lined with food filtering flagellated cells 'Choanocyte' indirect development with larva like parenchymata and amphiblastula.

parenchymula

BQ4Q566

A jawless fish, which lays eggs in fresh water and whose ammocoetes larvae after metamorphosis return to the ocean is :

- (A) ~~Petromyzon~~ (Lamprey)
- (B) Eptatretus
- (C) Myxine
- (D) Neomyxine

BQ4S566

Ans [A]

Petromyzon is jawless marine fish which lays egg in fresh water and whose ammocoetes larva after metamorphosis return to the ocean.

BQ4Q570

Which of the following characteristic features always holds true for the corresponding group of animals?

(A)	Viviparous	Mammalia
(B)	Possess a mouth with an upper and a lower jaw	Chordata
(C)	3-chambered heart with one incompletely divided ventricle	Reptilia
(D)	Cartilaginous endoskeleton	Chondrichthyes

we find egg laying mammals

Jawless

BQ4S570

Ans [D]

Chondrichthys always have cartilaginous endoskeleton.

BQ4Q571

Chrysophytes, Euglenoids, Dinoflagellates and Slime moulds are included in the kingdom

~~(A)~~ Protista

(C) Animalia

(B) Fungi

(D) Monera

(Prokaryotes)

BQ4S571

Ans [A]

All unicellular eukaryotic organism like diatoms, desmids (chrysophytes), euglenoids, dinoflagellates and slime mould are included in Protista.

BQ4Q572

The primitive prokaryotes responsible for the production of biogas from the dung of ruminant animals include the -

- (A) Thermoacidophiles
- (B) Methanogens
- (C) Eubacteria
- (D) Halophiles

BQ4S572

Ans [B]

Methanogens are methane producing organism.

BQ4Q573

Which one of the following statements is wrong ?

- (A) Golden algae are also called desmids
- ☒ (B) Eubacteria are also called false bacteria
- (C) Phycomycetes are also called algal fungi
- (D) Cyanobacteria are also called blue-green algae

Eubacteria
↓
True bacteria