

BRAIN



BRAIN:

Location of brain: Below the cranium (skull).
*
- कपालमास्थ

Weight: 1350-1450gm

- average weight of brain: 1400gm - 20 years 3gm/yr
- Weight of brain in child : (350-400)gm

Function of Brain:

1. To provide Intelligence
2. To control our body ✓

सामान्य बुद्धि

Parts of Brain: 3

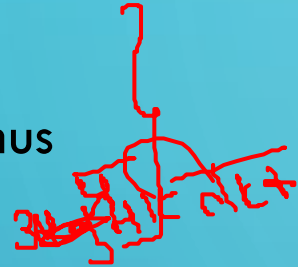
अग्र मस्तिष्क

1. Fore Brain: largest part of our brain

Thalamus

Hypothalamus

Cerebrum



F.B > H.B. > M.B

मध्य

2. Mid Brain: Smallest part of our brain

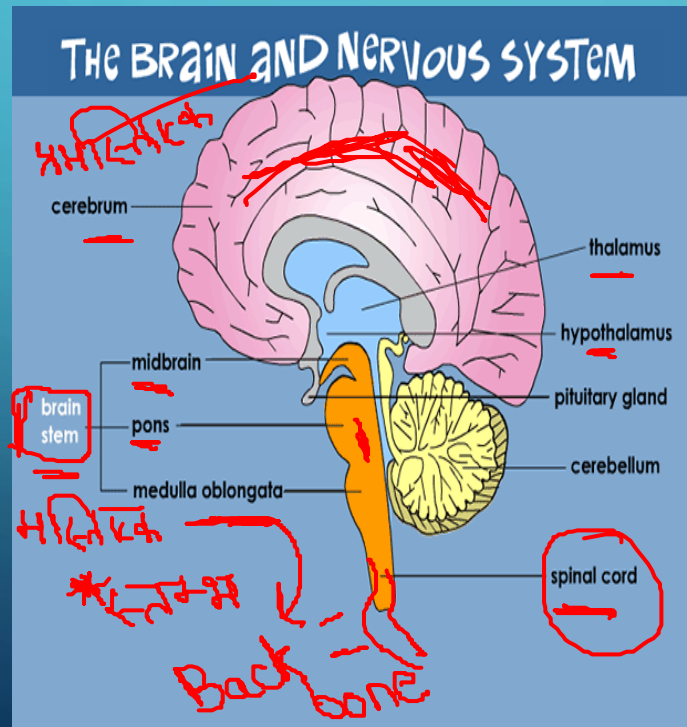
3. Hind Brain: पश्च

Medulla Oblongata

Cerebellum

Pons

अनुम.



Function of Medulla Oblongata:

It mainly controls "Involuntary Function"

अनारिक्त

There are 2 types of Involuntary Mechanism:

1. Vital Mechanism: All the function which are needed by our body and in its absence our body dies.

- - जीवन क्रिया - -

Example: Heart beat, respiration, excretion, circulation of blood,

Digestion

- पाचन

घसन श्वसन

उत्सर्जन

रक्त

2. Accessory Functions: All the function which is needed by our body but in its absence our body does not die.

सहायक क्रिया ✓

Example: yawn, hiccups, cough, sneezing, snoring, burp, vomit,

उल्टी

Blinking of eyes.

उकासी टिचकी खोसी दौक

खर्राटा बकाह

Function of Cerebellum:

अनुमतिक

Also known as "Little Brain" / "Tree of Life"

जीवन का वृक्ष

Latin

Respiration

M.O.
Pons

Cerebell

1. Helps in muscle motion/motor function

पेशीय संकुचन

चल गिया *

2. Regulates Body posture

3. Balancing of body संतुलन

4. Helps in speaking

अनुमतिक

Alcohol शराब

Small

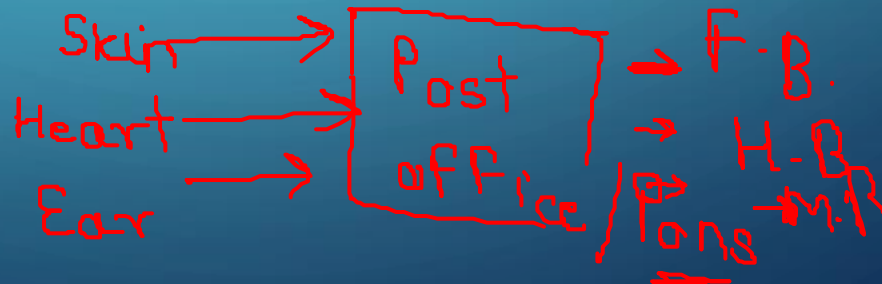
Brain

↓
Cerebellum

Function of Pons:

1. Communicate body and brain

2. Helps Medulla Oblongata



Function of Mid Brain:

Also known as "sixth sense"

1. It controls auditory and visual functions.

Function of Fore Brain: It is also known as "Higher Brain".

Thalamus: It controls:

Nose- Smell *

Tongue- Taste

Skin- External Pain, External Temperature, touch *

Hypothalamus: It controls:

1. Feelings (hunger, thirst, sleep, fear, love). anger, internal pain

2. Regulates Body Temperature. (10 times)

deaf, blind

हेतु

दो-इंद्रिया *

Sensory organ

संवेदी

Eye

Ear

Nose

Tongue

skin

श्रवण

दृष्टि

अध

↳ largest

अध

Dog

11

भावो

भुख

internal

(10 times)

Cerebrum: मूह

Largest sub part of brain 34 भाग *

80% of fore brain

Functions:

1. Provides Intelligence

सामान्य बुद्धि

2. ~~Formation and storage of memory~~

3. Logical Reasoning

वैकल्पिक

Driving

0.2.1.

4. Communication

सामंजस्य

5. Thinking, ~~Concentration~~, Creativity

सोच

एकाग्रता

रचनात्मक कार्य

6. Distance, Direction, Speed

7. Emotions

भावनाओ - Sad, Happy